

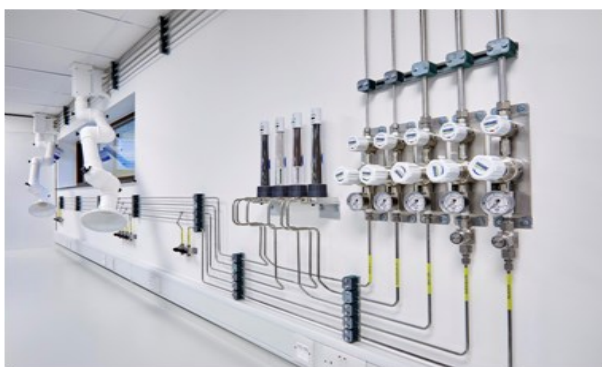


Analytical Gas Installation



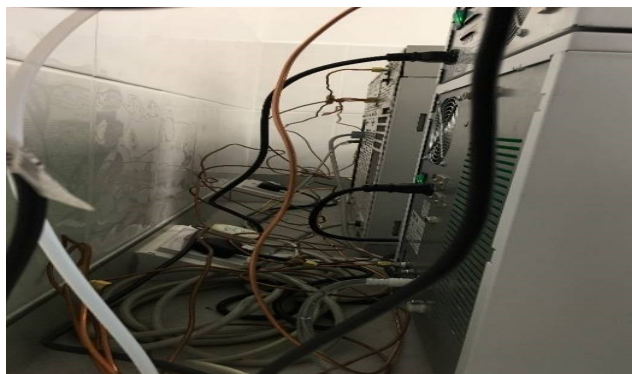
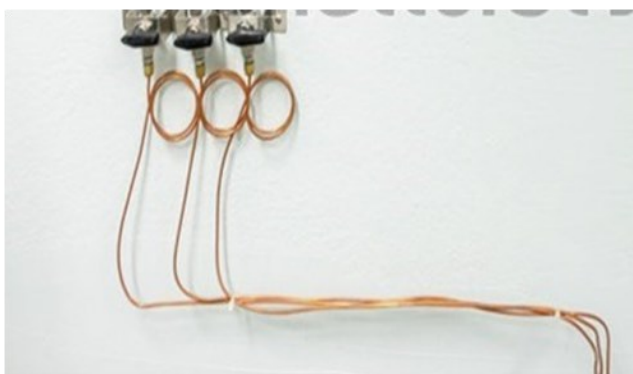
If you have had your laboratory recently fitted out with new gas lines recently, they will probably look very professional and comply [Pressure System Safety Regulations 2000](#) or with the [Health & Safety at Work Act 1974](#) and with best practices from the [British Compressed Gas Association](#) (BCGA). You may have made the decision to use gas generators which have in-built safety features. If this is not the case and you may need to have your installation inspected.

Professional Gas Installation - Image Courtesy GasTek.com



The installation may terminate with one regulator or isolation valve for each gas. This may not be a problem however if you have more than one instrument or the number of instruments expand you will require separate isolation valves for each instrument. This setup enables you to keep instruments running, while maintaining or decommissioning older instrument.

Typical GC Gas Installation



Also more often than not valves and fittings to the instrument may not look so neat and tidy and could be intertwined 1/8" copper tubing. Critically this may not easily be identifiable if you need to isolate, leak check, or reconfigure the gases, particularly if you have restricted access around the back of the instrument.

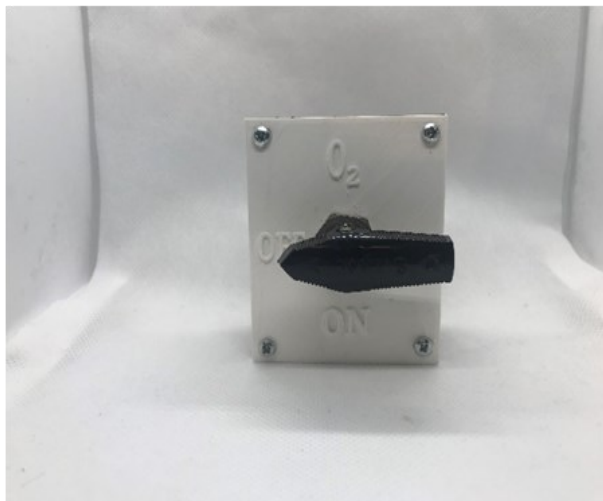
Therefore, to make the identification easier ChromSolutions have developed a series of low cost products to identify valves, gas lines and sample cylinders. We have some standard 3D printing products, however, we can easily customise to gas type, valve and tag sizes to your specific requirements.



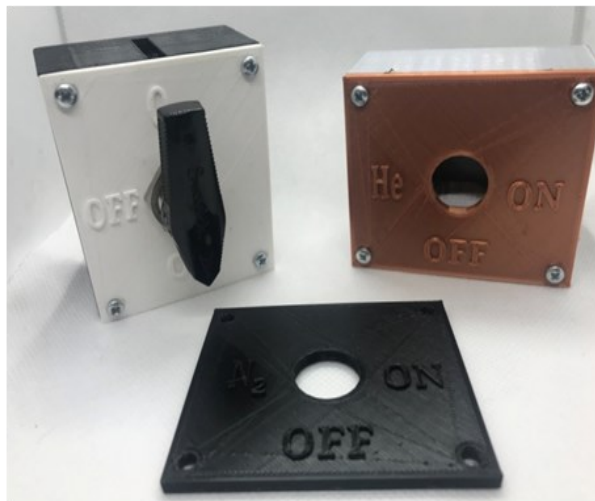
Gas Isolator Valve and Gas Line/Sample Cylinder Tags

3D printed in PLA the boxes allow mounting of an isolator valve. The box and lids are colour coded according to [BCGA – Technical information sheet 6](#) : Gas cylinder identification label and colour code requirements. They will also display the gas type by its chemical symbol and show the on/off status of the valve. The boxes are available for all commonly used laboratory gases and can be mounted either in a vertical or horizontal orientation.

2 Way Valve Boxes



Vertically Mounted Oxygen



Horizontally Mounted Helium



The boxes can be mounted vertically or horizontally, as single gases or as multiple boxes on a back plate. Both the individual and the single boxes can be mounted to walls or bench tops.

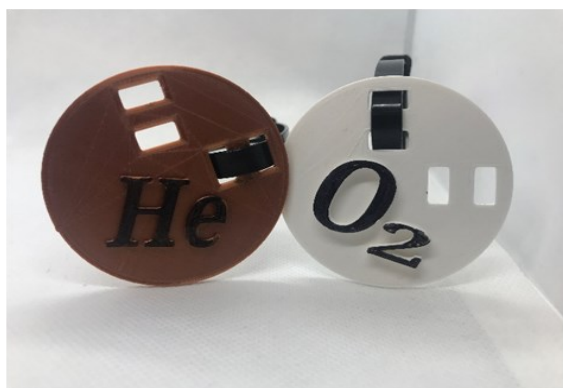
The boxes provide a convenient way to mount an isolator valve that allows easy access and identification of the gas that the valve isolates.



Part Number	Product	Length (mm)	Width (mm)	Height (mm)	Weight (g)
CS-VB-BB8-3D	Single Back Box	60	32	70	
CS-VB-***-3D	Single Front Plate	60		70	
CS-VB-BP2-3D	2 Box Bracket	135	37	80	26
CS-VB-BP3-3D	3 Box Bracket	19.5	37	80	38
CS-VB-BP4-3D	4 Box Bracket	26.0	37	80	50

Gas Line/Sample Cylinder Tags

Also printed in PLA are the gas line tags. Again they are colour coded according to [BCGA](#) – Technical information sheet 6 : Gas cylinder identification label and colour code requirements. They will also display the gas type by its chemical symbol and can be mounted vertically or horizontally:



Part Number	Product	Diameter (mm)	Width (mm)	Weight (g)
CS-GT-***-3D	Gas Tag	60	0.4	6

* replace *** with gas type i.e. He – Helium, O₂ – Oxygen etc

For more information on Analytical Gas installation from ChromSolutions please contact us

