



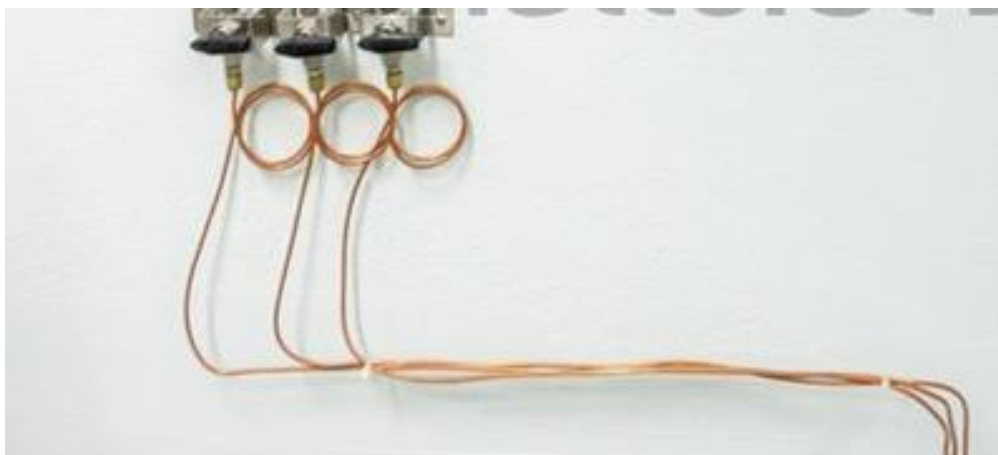
Gas Line/Sample Cylinder Tags - PIB CS21001

Analytical Gas Installations

If you have had your laboratory recently fitted out with new gas lines recently, they will probably look very professional and comply [Pressure System Safety Regulations 2000](#) or with the [Health & Safety at Work Act 1974](#) and with best practices from the [British Compressed Gas Association](#) (BCGA). You may have made the decision to use gas generators which have in-built safety features. If this is not the case and you may need to have your installation inspected.

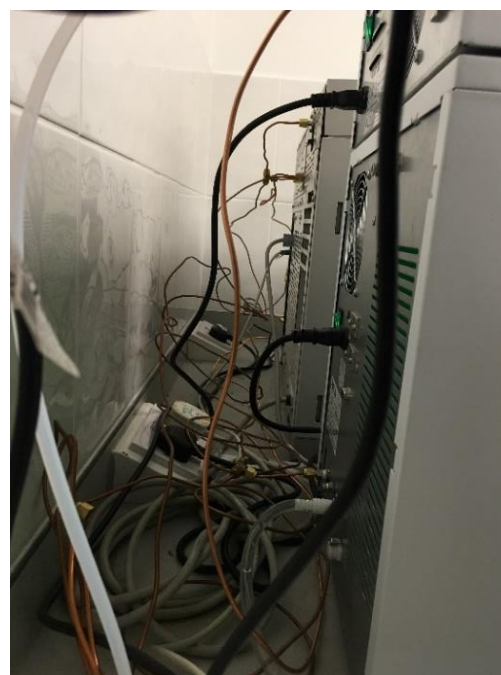
The installation may terminate with one regulator or isolation valve for each gas. This may not be a problem however if you have more than one instrument or the number of instruments expand you will require separate isolation valves for each instrument. This setup enables you to keep instruments running, while maintaining or decommissioning older instruments.

Typical GC Gas Installation



More often than not valves and fittings to the instrument may not look so neat and tidy and could be intertwined 1/8" copper tubing. Critically this may not easily be identifiable if you need to isolate, leak check, or reconfigure the gases, particularly if you have restricted access around the back of the instrument. Also, any isolation valve fitted may not be secured to a fixing point or surface which on operation can lead to strain on the fittings which can result in leaks.

Therefore, to make the identification easier ChromSolutions have developed a series of low cost products to identify valves, gas lines and sample cylinders. We have some standard 3D printing products; however, we can easily customise to gas type, valve and tag sizes to your specific requirements

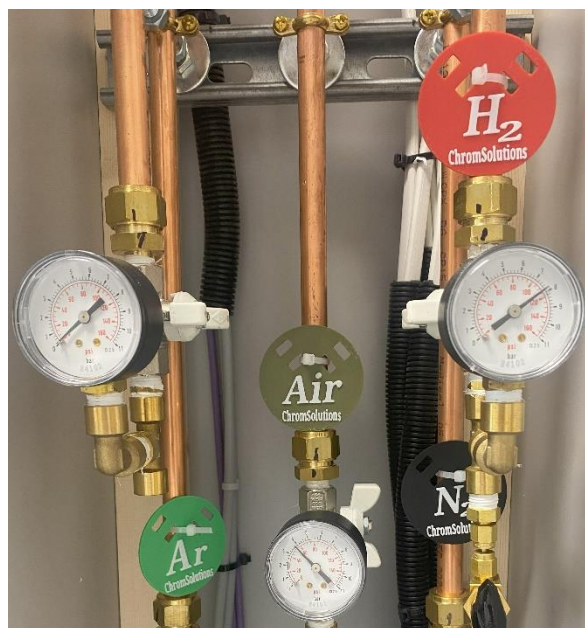




Gas Line/Sample Cylinder Tags

Also printed in PLA are the gas line tags. Again they are colour coded according to [BCGA – Technical information sheet 6](#) : Gas cylinder identification label and colour code requirements. They will also display the gas type by its chemical symbol and can be mounted vertically or horizontally:

Gas Tags



- Clearly identifies gas type

The tags provide a convenient way to easily identify the contents of gas lines. The tags are available for all commonly used laboratory gases.

Part Number	Product	Diameter (mm)	Height (mm)	Weight (g)
CS-GT-***-3D	Gas Tag	60	3	6

* replace *** with gas type i.e. H2 – Hydrogen, He – Helium, O2 – Oxygen, N2 – Nitrogen, Ar – Argon, AIR – Air. Other gases and company names available on request.